



EMBLEM SCONCE V056-EMBLEM-SCONCE

Application Features

For retail, hospitality and residential applications.

Construction

Low profile wall sconce with illuminated decal and custom cutout artwork at base. Customer to supply artwork in DXF format or select from VQL standard numerical options.

Finish

- Choice of silver, white or black powder paint
- Specify other powder paint option
- Brushed stainless steel

Electrical

- 1 x 5W LED Module

Mounting

- Fixture attaches to deep junction box (J-Boxes supplied by others)

Approvals

UL Listed



JOB NAME

V056-EMBLEM-SCONCE-

Diffuser Material

- CL Clear Acrylic With Frosted Edges
- AB Alabaster Acrylic

Finish Options

- WH WHITE POWDER PAINT
- BK BLACK POWDER PAINT
- SV SILVER POWDER PAINT
- OT Specify Other POWDER PAINT
- SS Brushed Stainless Steel Plating

LED Color Temperature

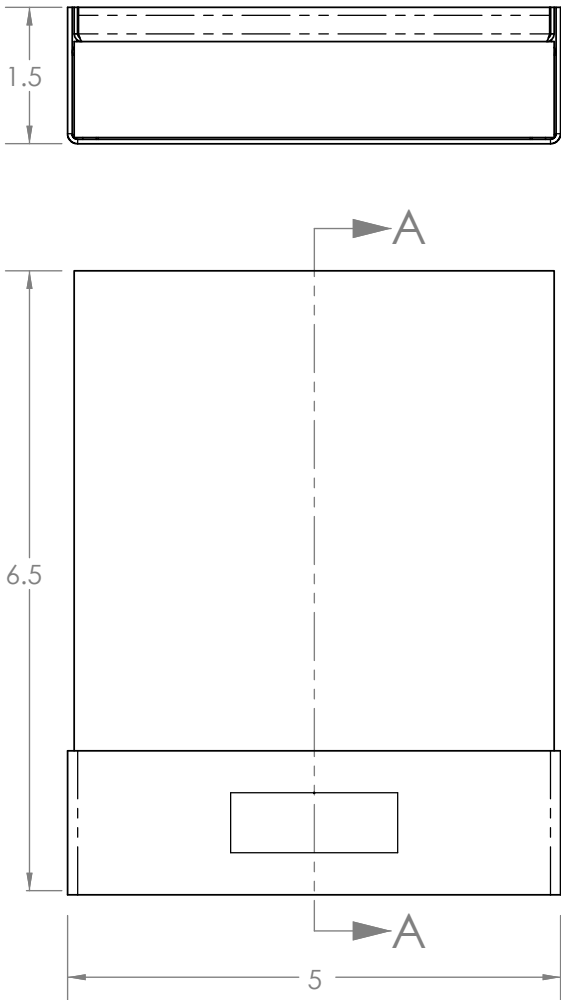
- 27 2700K
- 30 3000K
- 36 3600K
- 40 4000K

Emblem Font

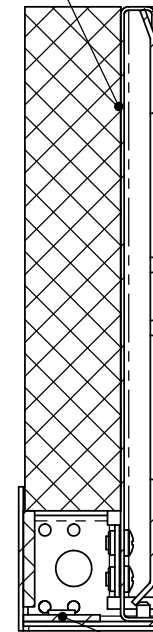
- STD STANDARD
 - OT Specify Font Type
- * Standard Font Is Avantgarde Gothic Demi (45PT)

EMBLEM SCONCE V056-EMBLEM-SCONCE

Wall Plate
Mounts To
A Deep
Junction Box
(J-Box Supplied
By Others)



Custom Decal
Between Acrylic
And Metal Back



SECTION A-A — LED Board

See Diffuser
Material Options

See Finish
Options

Custom
Cut Artwork

Fixture specifications

V056-EMBLEM-SCONCE-DFR-FSH-CCT-FNT Emblem Sconce	
Specification	Details
Voltage	120V AC 60 HZ
Wattage	1 x 5W Maximum
Approval	UL Listed
Diffuser Material	Acrylic
Lamp Type (Lamp not Included)	LED Module
Fixture Weight	2 lbs.
Fixture Dimensions	5" x 1.5" x 6.5"

- Fixture is packed one per cardboard box
- Fixture to be installed by other contractor