



RECTANGULAR PENDANT V056-RP

Application Features

For residential, hospitality and commercial applications.

Construction

Custom printed graphic backed with polycarbonate and mounted to a powder coated frame with bottom white acrylic diffuser

Finish

Powder Coated metal frame in choice of white or silver

Electrical

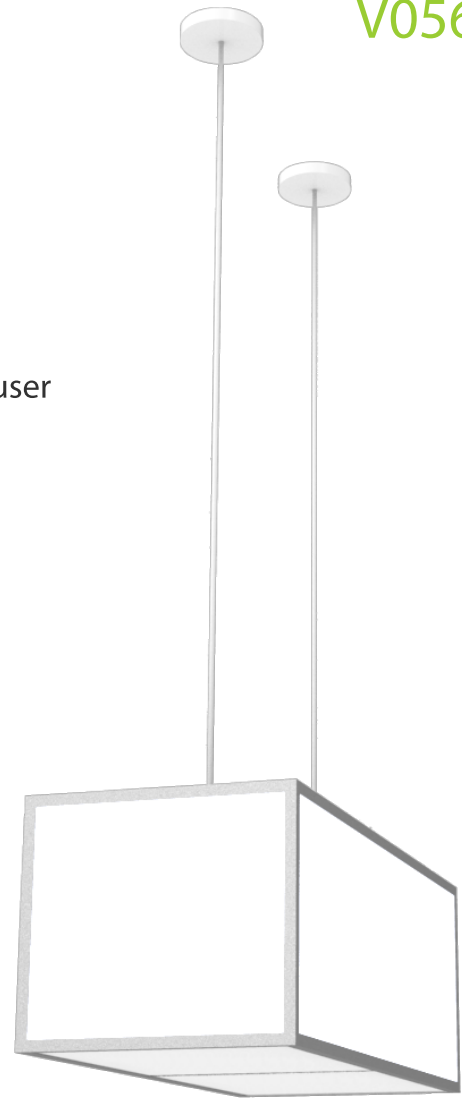
- 1, 2 or 3 x E26 Medium Base Sockets (Lamps not included)
- Fixture suspended by white electrical cord from 2 x 5 inch diameter ceiling canopy

Mounting

Fixture attaches to a standard J-Box (J-Box Not Supplied)

Approvals

UL Listed



JOB NAME

V056-RP-

Shade Length

- SQ## 10" To 19" Max. Square (1 x E26 Socket)
- R1## 20" To 30" Max. Rectangle (2 x E26 Sockets)
- R2## 31" To 48" Max. Rectangle (3 x E26 Sockets)

eg. - SQ16 is a 16" square fixture

Shade Width

- Width 10" To 24" Max.
eg. - 12 is a 12" wide fixture

Overall Fixture Height

- Specify in Inches To A Minimum Height Of 10" And Maximum Height Of 36"

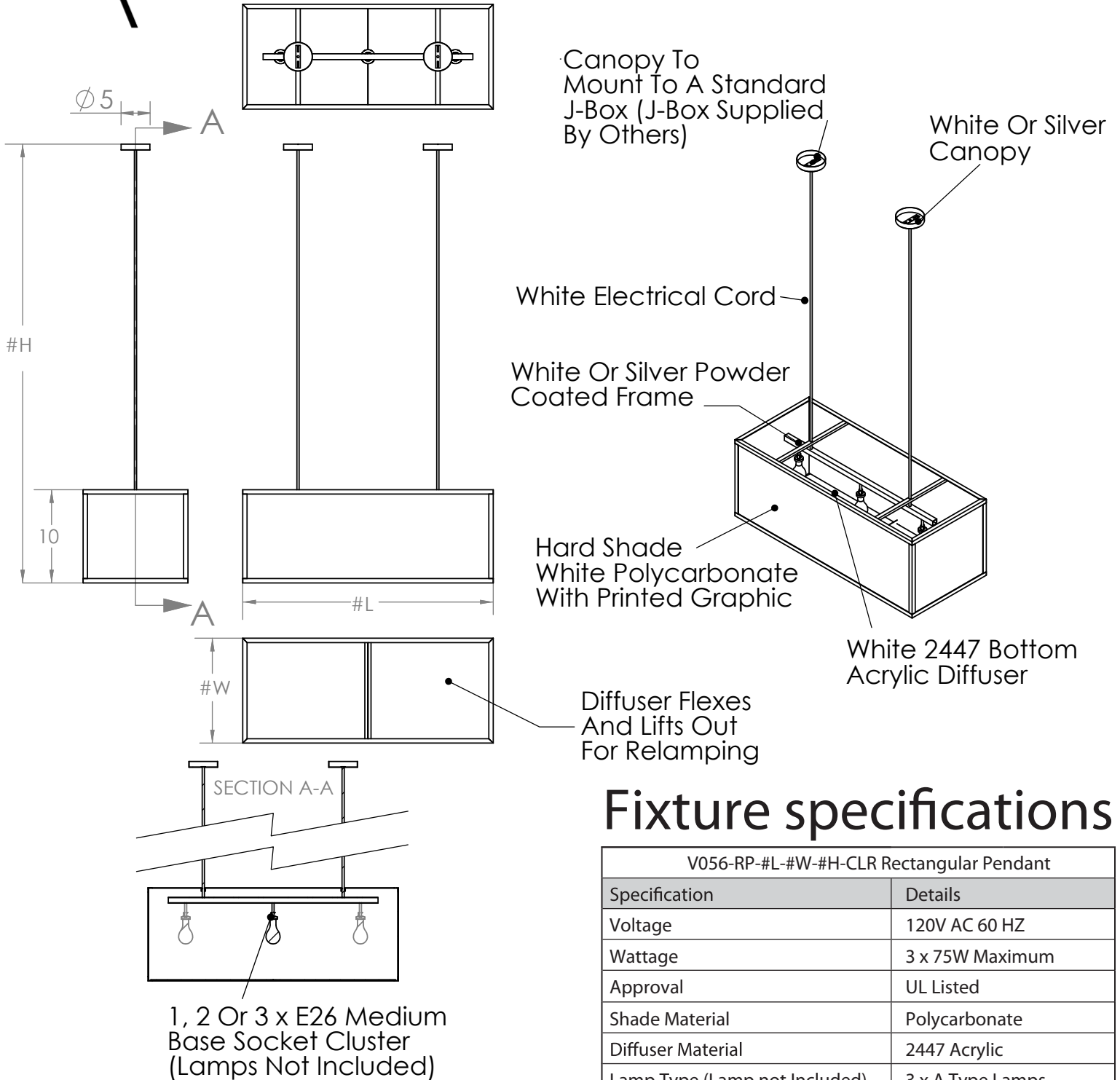
Frame Finish

- WH WHITE
- SV SILVER

Vision Quest Lighting, Inc., assumes no responsibility for suitability of these materials in any luminaire or application. Please test for fit and function prior to ordering project quantities.

Manufactured by Vision Quest Lighting in the USA 90 13th Avenue, Unit 1, Ronkonkoma, NY 11779 Tel: 631-737-4800 Fax: 631-737-2808 Email: info@VQL.com

RECTANGULAR PENDANT V056-RP



Fixture specifications

V056-RP-#L-#W-#H-CLR Rectangular Pendant	
Specification	Details
Voltage	120V AC 60 HZ
Wattage	3 x 75W Maximum
Approval	UL Listed
Shade Material	Polycarbonate
Diffuser Material	2447 Acrylic
Lamp Type (Lamp not Included)	3 x A Type Lamps
Fixture Weight	10 - 75 lbs.
Fixture Dimensions	10"-48" x 10"-24" x 10"-36" Max.

- Fixture is packed one per cardboard box
- Fixture to be installed by other contractor